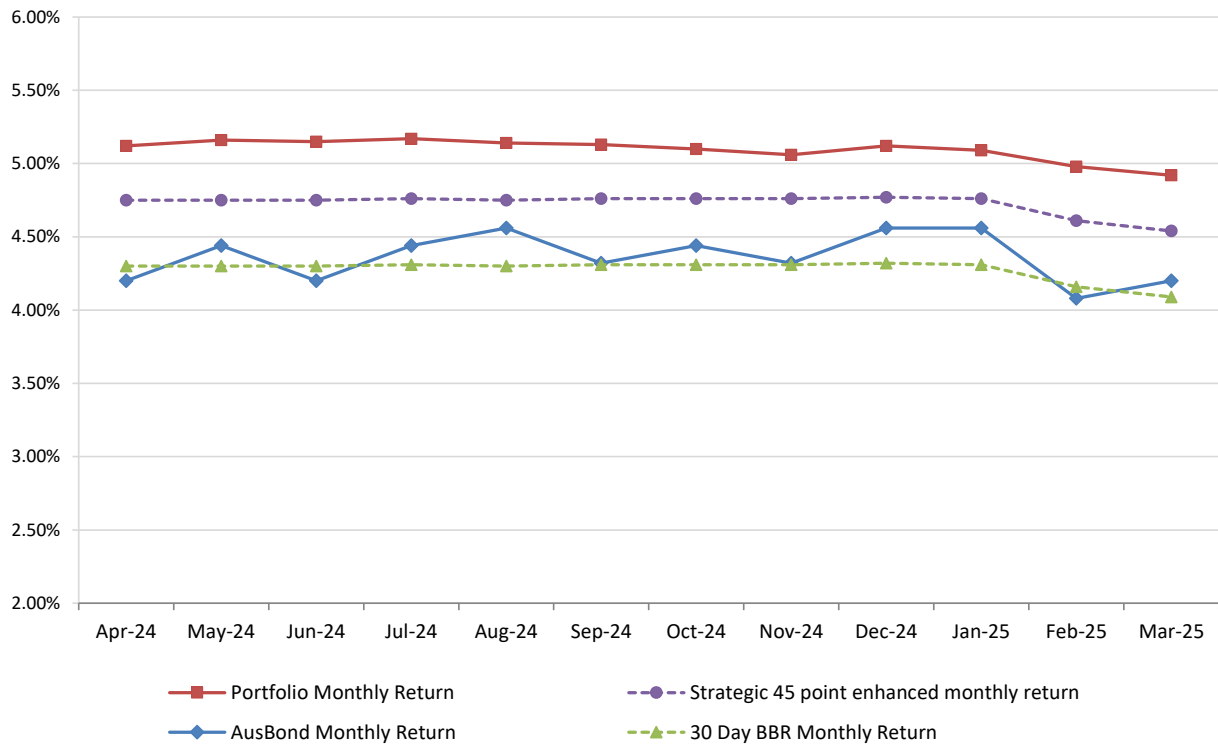


Attachment B

**Investment Performance
as at 31 March 2025**

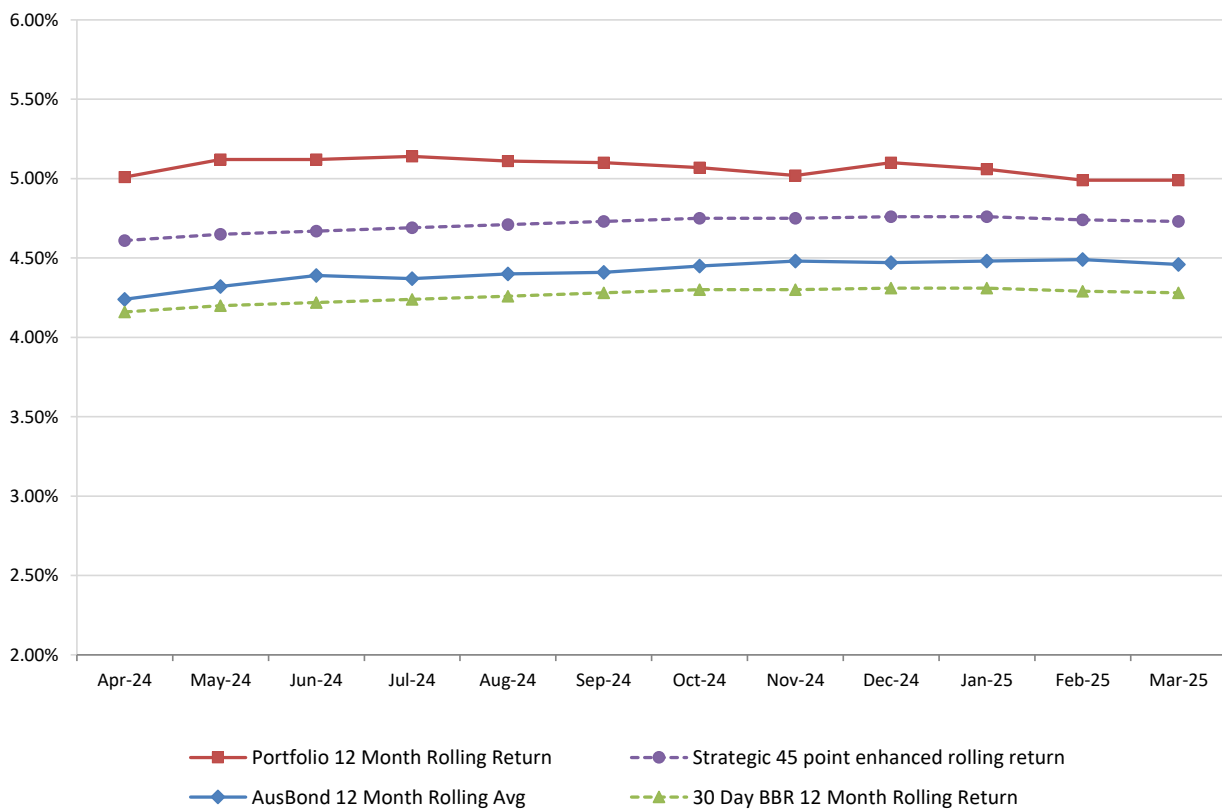
Monthly Results

Actual Portfolio vs Strategic Enhanced Benchmark vs AusBond Benchmark vs 30 Day BBR Benchmark March 2025

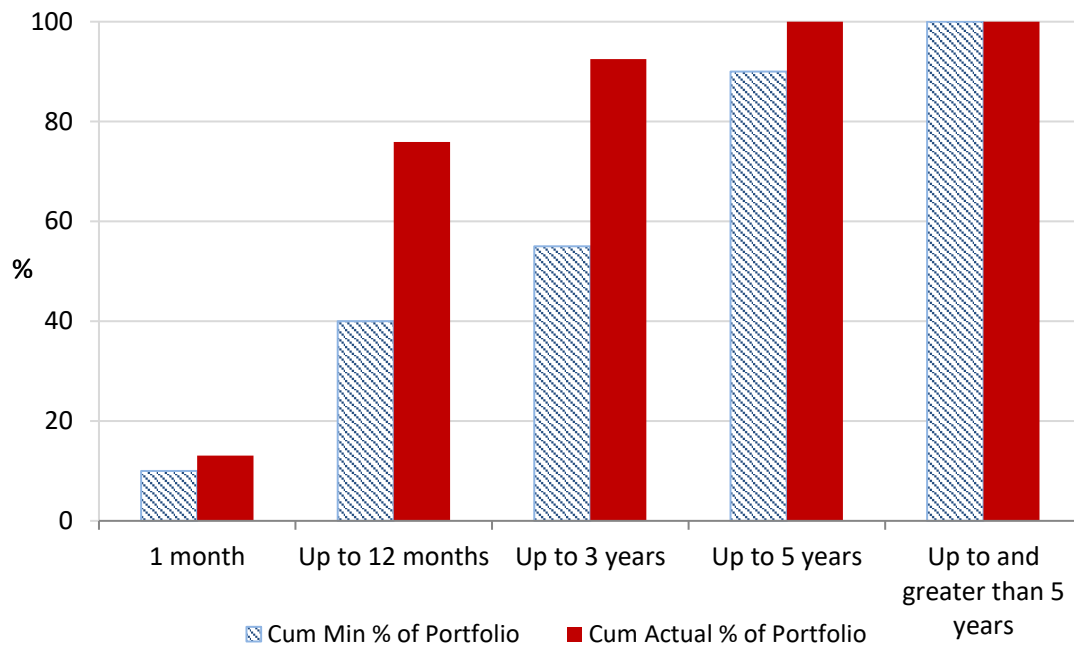


12 Month Rolling Averages

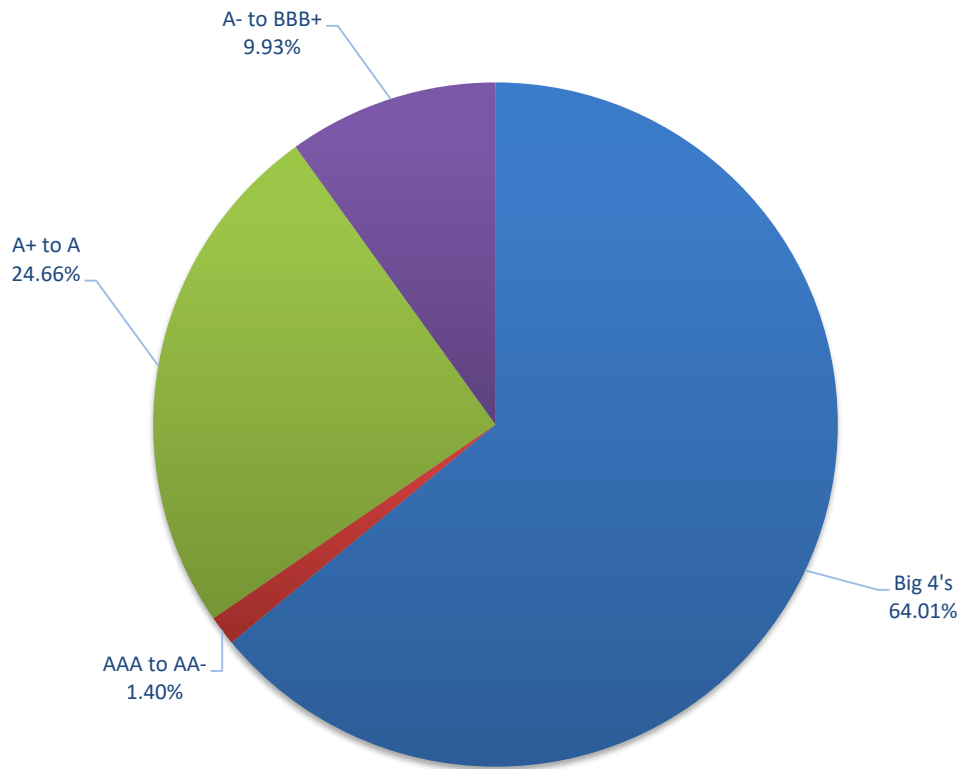
Actual Portfolio vs Strategic Enhanced Benchmark vs AusBond Benchmark vs 30 Day BBR Benchmark March 2025



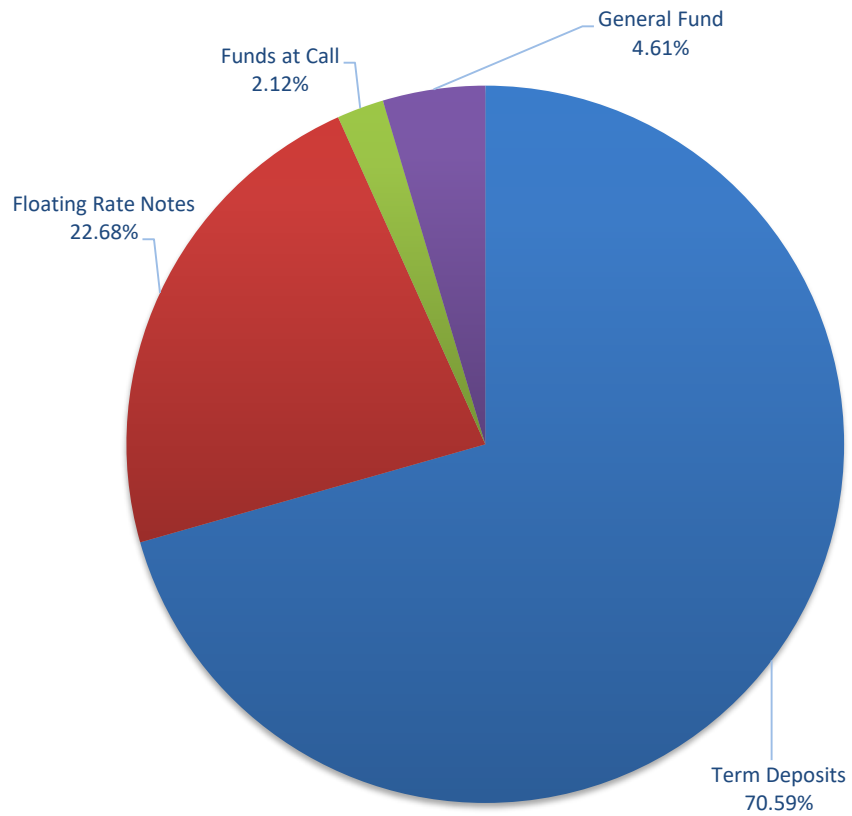
Portfolio Liquidity - Minimum Allocations as at 31 March 2025



Risk Profile as at 31 March 2025



Risk Profile as at 31 March 2025



INVESTMENT AND CASH DISTRIBUTION BY FINANCIAL INSTITUTION				
as at 31 March 2025				
Institution Category	Financial Institution	Amount \$M	Financial Inst. %	Institution Cat. %
Australian Big 4 Bank (and related institutions)	ANZ Bank	23.0	3.1	
	Commonwealth Bank	23.8	3.2	
	National Australia Bank	176.5	24.0	
	Westpac Banking Corporation	215.8	29.3	
Big 4 Total		439.1		59.72
Other Australian ADIs and Australian subsidiaries of foreign institutions	Bank Australia Limited	9.5	1.3	
	Bank of Queensland	63.0	8.6	
	Bendigo & Adelaide Bank	13.0	1.8	
	Great Southern Bank (formerly Credit Union Australia)	8.9	1.2	
	ING Bank	95.0	12.9	
	Suncorp Bank	76.5	10.4	
	Macquarie Bank Ltd	9.0	1.2	
	Northern Territory Treasury Corporation	10.0	1.4	
	Newcastle Greater Mutual Group Ltd	11.3	1.5	
Other ADI Total		296.2		40.28
Grand Total		735.2	100.0	100.000